



THE WALLED GARDEN

TADWORTH

www.michael-everett.co.uk

24 THE WALLED GARDEN

TADWORTH, KT20 5UR



1 RECEPTION ROOM



KITCHEN



3 BEDROOMS



BATHROOM & EN SUITE SHOWER ROOM

866.71 FT² | 80.52 M²

EPC RATING: C

COUNCIL TAX BAND: F

SERVICE CHARGE: £350PA

Built in 1995 and located in an award winning courtyard style gated development a very well presented mid terraced cottage with a south facing rear garden and covered parking.

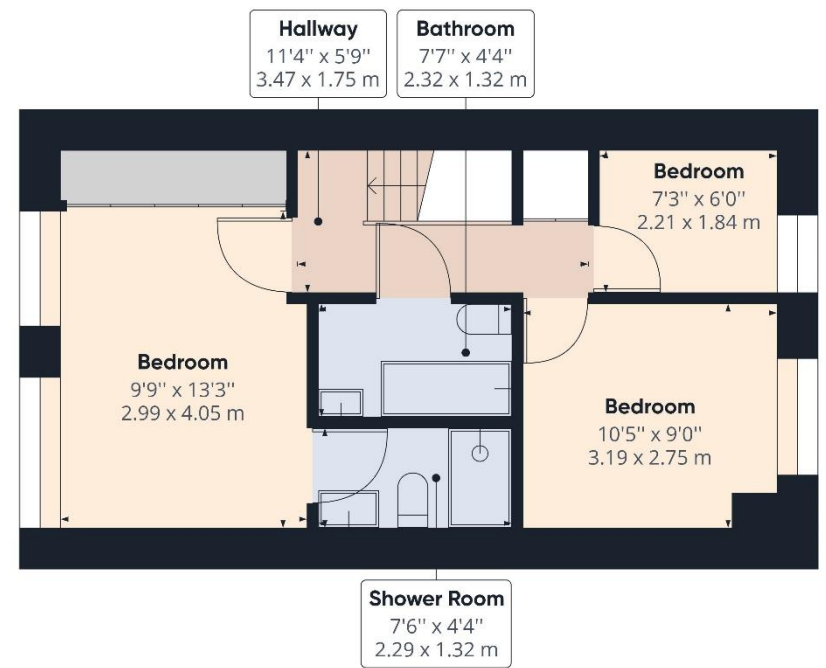
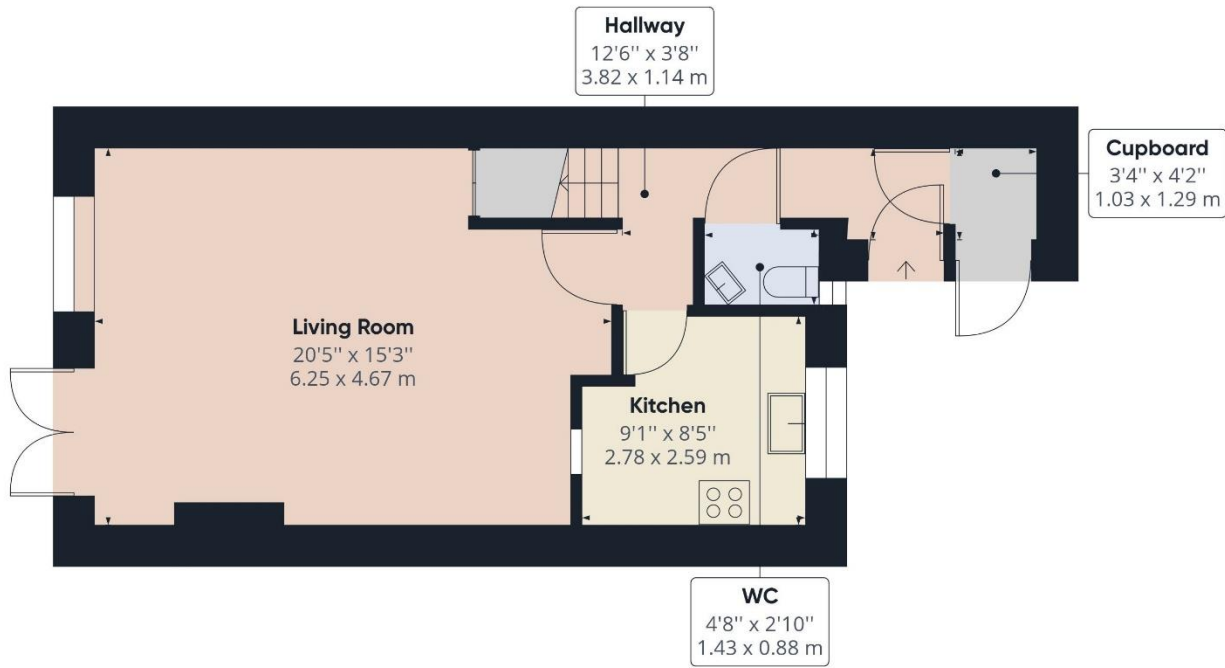
This lovely home features a large living room with fireplace, a well equipped kitchen, cloakroom and a large storage/utility room. On the first floor the main bedroom has fitted wardrobes and an en suite shower room. In addition, there are two further bedrooms, one double and one single and a bathroom.

Outside, to the front there is a small private garden, well maintained communal grounds extensive visitor parking and access to a private single car port. To the rear there is a lovely walled garden which is paved for easy maintenance.

The Walled Garden is conveniently located at the entrance to Tadworth Park and within a 10 minute walk of the village centre shops and services, the open spaces of Walton Heath and several highly regarded gastro pubs. The village doctors surgery is located adjacent to the development.

GUIDE PRICE: £595,000 FREEHOLD







WALTON ON THE HILL 61 Walton Street, Walton-on-the-Hill, Surrey KT20 7RZ
01737 814877



IMPORTANT We would inform prospective purchasers that these sales particulars have been prepared as a general guide only. A detailed survey has not been carried out, nor the services, appliances and fittings tested. Room sizes should not be relied upon for furnishing purposes and are approximate. If floor plans are included, they are for guidance only and illustration purposes only and may not be to scale. If there are any important matters likely to affect your decision to buy, please contact us before viewing the property.

michael-everett.co.uk